

Bcl-G BH3 Domain Antibody
Purified Rabbit Polyclonal Antibody (Pab)
Catalog # AP1304a**Specification**

Bcl-G BH3 Domain Antibody - Product Information

Application	WB, IHC-P,E
Primary Accession	Q9BZR8
Reactivity	Human
Host	Rabbit
Clonality	Polyclonal
Isotype	Rabbit IgG
Calculated MW	36598
Antigen Region	194-229

Bcl-G BH3 Domain Antibody - Additional Information**Gene ID** 79370**Other Names**

Apoptosis facilitator Bcl-2-like protein 14, Bcl2-L-14, Apoptosis regulator Bcl-G, BCL2L14, BCLG

Target/Specificity

This Bcl antibody is generated from rabbits immunized with a KLH conjugated synthetic peptide between 194-229 amino acids from human Bcl.

Dilution

WB~~1:2000

IHC-P~~1:50~100

E~~Use at an assay dependent concentration.

Format

Purified polyclonal antibody supplied in PBS with 0.09% (W/V) sodium azide. This antibody is prepared by Saturated Ammonium Sulfate (SAS) precipitation followed by dialysis against PBS.

Storage

Maintain refrigerated at 2-8°C for up to 2 weeks. For long term storage store at -20°C in small aliquots to prevent freeze-thaw cycles.

Precautions

Bcl-G BH3 Domain Antibody is for research use only and not for use in diagnostic or therapeutic procedures.

Bcl-G BH3 Domain Antibody - Protein Information**Name** BCL2L14**Synonyms** BCLG

Function Plays a role in apoptosis.

Cellular Location

Cytoplasm. [Isoform 2]: Endomembrane system. Note=Predominantly localized to cytosolic organelles

Tissue Location

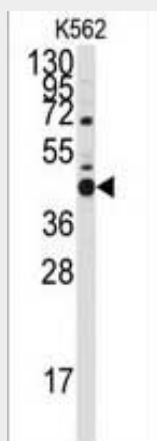
Isoform 1 is widely expressed. Isoform 2 is testis- specific.

Bcl-G BH3 Domain Antibody - Protocols

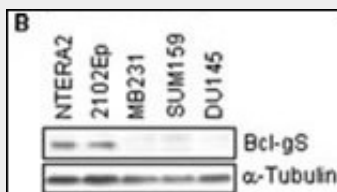
Provided below are standard protocols that you may find useful for product applications.

- [Western Blot](#)
- [Blocking Peptides](#)
- [Dot Blot](#)
- [Immunohistochemistry](#)
- [Immunofluorescence](#)
- [Immunoprecipitation](#)
- [Flow Cytometry](#)
- [Cell Culture](#)

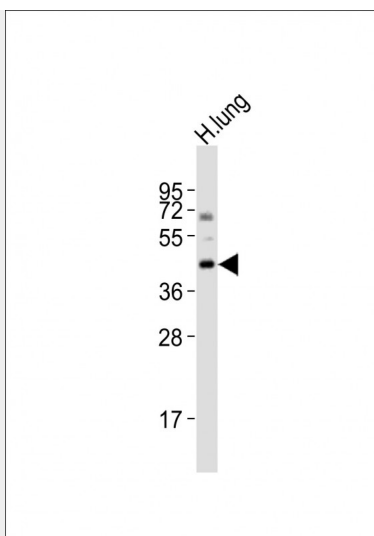
Bcl-G BH3 Domain Antibody - Images



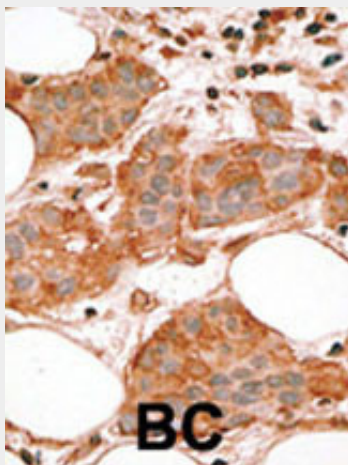
Western blot analysis of anti-Bcl-G BH3 Domain Pab (Cat. #AP1304a) in K562 cell line lysates (35ug/lane). Bcl-G BH3 Domain (arrow) was detected using the purified Pab.



Cell lysates were subjected to Western blotting to determine the expression of Bcl-gS protein. The levels of alpha-tubulin were determined to assure equal loading.



Anti-Bcl-G-BH3 Antibody at 1:2000 dilution + human lung lysates Lysates/proteins at 20 µg per lane. Secondary Goat Anti-Rabbit IgG, (H+L), Peroxidase conjugated at 1/10000 dilution Predicted band size : 37 kDa Blocking/Dilution buffer: 5% NFDM/TBST.



Formalin-fixed and paraffin-embedded human cancer tissue reacted with the primary antibody, which was peroxidase-conjugated to the secondary antibody, followed by AEC staining. This data demonstrates the use of this antibody for immunohistochemistry; clinical relevance has not been evaluated. BC = breast carcinoma; HC = hepatocarcinoma.

Bcl-G BH3 Domain Antibody - Background

Bcl-G belongs to the BCL2 protein family. BCL2 family members form hetero- or homodimers and act as anti- or pro-apoptotic regulators that are involved in a wide variety of cellular activities. Overexpression of Bcl-G has been shown to induce apoptosis in cells.

Bcl-G BH3 Domain Antibody - References

Ozalp, S.S., et al., Eur J Gynaecol Oncol 23(5):419-422 (2002).
Guo, B., et al., J. Biol. Chem. 276(4):2780-2785 (2001).

Bcl-G BH3 Domain Antibody - Citations

- [A novel role for proline- and acid-rich basic region leucine zipper \(PAR bZIP\) proteins in the transcriptional regulation of a BH3-only proapoptotic gene.](#)